

SKI files in FIS format

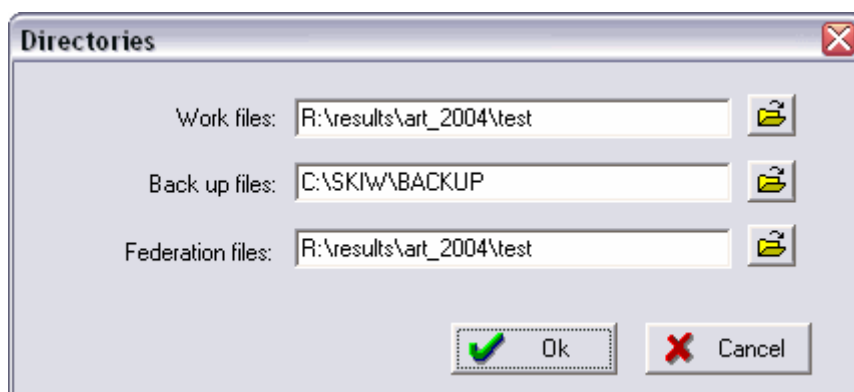


SKI files in FIS format can be used to update the seed points for an existing event. This is useful for example if you have used one seed list to create your acceptance list, but a new seed list comes into force before your actual event takes place. Instead of manually going through and updating the seed points for each competitor by looking them up on a printed seed list, you can use these 'FIS format' files to do the updating for you.

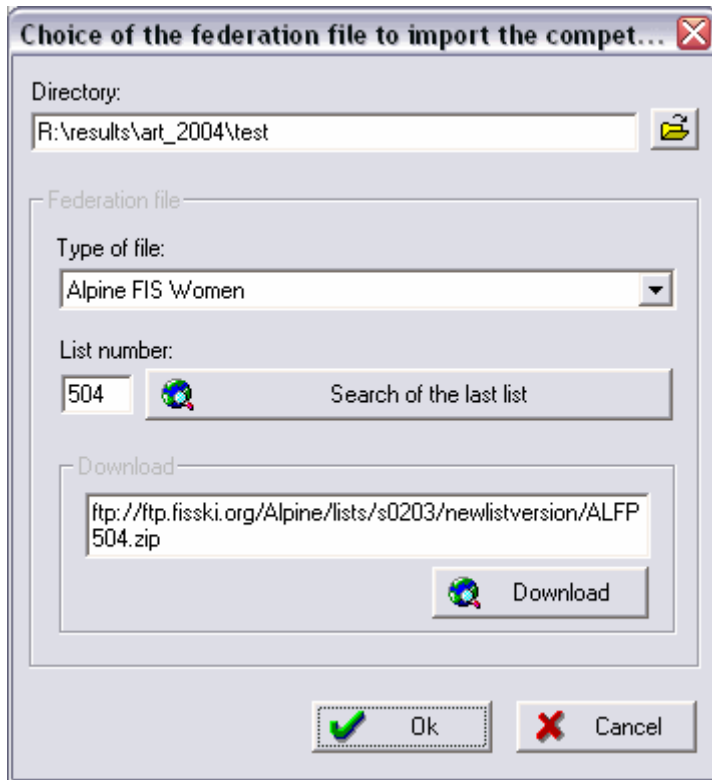
Note that although we are referring to them as SKI "FIS" files, they still contain the SSE seed list and not a FIS snow seed list.

Shown below are the steps you will need to follow to make use of this feature.

- 1) Download the SKI FIS files
The files are provided in a ZIP file, just like the standard seed list files you are used to using.
- 2) Unzip the files
You can unzip them into the same folder as your event and your standard seed list files.
- 3) Tell SKI where to find them
Start SKI, pull down the Configuration menu, and choose Directories. Set the 'Federation Files' folder to the place where you have just unzipped the files, which is probably the same place as the 'Work files' already points to.



- 4) Open your event file
From the File menu choose Open, or use the first button on the toolbar, just like normal. Choose the right event and click OK.
- 5) Open the FIS-format file
Pull down the Competitors menu, and choose "Entry automatically" and then "With a federation file". This form will open :



The 'Directory' should already be set up. In "Type of file" choose Alpine FIS Women or Men depending on the sex of the competitors you wish to load. In 'List number', enter a three-digit number where the first digit is the list number during the year, and the other two digits are the year. The example above shows 504, the fifth 04 list, or in other words 2004.5. Click OK.

- 6) Update your event with the new points
From the Competitors menu, select "Entry automatically" and then "With a federation file". A competitor entry form opens, headed "Federation file : Alpine FIS Women" (or Men). Click on "Scan Points", and a message appears "Ok for the update of the points of competitors". Click Yes, then click Close. Points for each entry in your event should now be updated.